

Technical Product Information No. 1150 EN

Oil inlets, 2- and 3 channel Series 0 088-226/326

Contents	Page
About this Technical Product Information (TPI)	2
The ORTLINGHAUS numbering system	2
Delivered state	3
Transport	3
Initial assembly and commissioning	4
Size and tightening torques of the screws	4
Maintenance	5
Spare parts	5
Different design variations	6

About this Technical Product Information (TPI)

Who is this TPI directed at?

This TPI is directed at qualified personnel who

- are entrusted with the assembly, commissioning and operation of the product and who
- have obtained the necessary qualifications by reading and understanding the instructions by training or instruction

It is intended for

- Fitters at the manufacturer of the machine / plant
- Maintenance fitters at the machine users.

What will you find in the TPI?

The TPI provides all the necessary information for the assembly and maintenance of the product described on the title page

Notes on the symbols used in the text

On the pages which follow, important sections of text are highlighted with the following symbols.



This symbol means:

There is a risk of injury during the activity described or in operational running!



This symbol means:

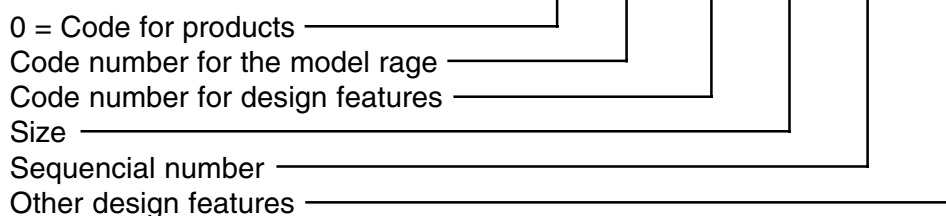
There is a risk of material damage during the activity described or in operational running!



This symbol indicates sections of text to which particular attention must be paid.

The Ortlinghaus numbering system

Example: 0 111 - 222 - 33 - 444 555

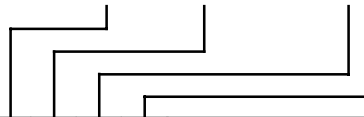


Pass this TPI on to your customers ! You can either order further copies of this TPI from us or you are free to make copies, for use by your customers.

Design variation

Type code:

0 088 - . 26 - 0 . .



2			number of connections	2
3			connections	3
	22		size of connections	G 1/2
	27			G 3/4
	35			G 1
		4	additional connections	leakage and measuring port
		7		pressure free-flow and measuring port
		0	additional flange mountings	without flange mountings
		1		with encoder
		2		with inductive sensor

Delivery state

The oil inlets are supplied fully assembled.

supply covers:

- threaded dowel DIN 913
- nut DIN 934
- flangeseal

Transport



Avoid hard impacts during transport which might damage the bearings or electronic flange mountings.

Any dirt to come into the oil inlet must be avoided.

Initial assembly and commissioning

The installation of new units must be carried out with the utmost care and cleanliness. It is therefore important to flush out all new pipes, tanks, valves etc. before fitting them to the system.

Assembly



- Seal tapped holes from machine shaft with LOCTITE 243 and screw threaded dowels into shaft.
- Put flange seal on to clean and scorefree face of the shaft.
- Slide oil inlet on to set screws and secure with nuts.
- When mounting the oil inlet consider corresponding channels of shaft and oil inlet.
- Tighten nuts crosswise.

Size and tightening torques of the screws

Oil inlet -Size-	Thread	Tightening torque [Nm]
22	M 8	25
27	M 10	51
35	M 12	87

- Remove closer plug of the oil inlet housing and connect with flexible hose.

Note max. length of flexible hose!

Oil inlet -Size-	max. Pressure connections [bar]
22	70
27	70
35	100

Use flexible connections (hoses).

Fixed connction with pipe is not permitted.

Connection port for leakage oil to be positioned vertically at lowest piont.

A pressure free flow of the leakage oil must be provided. Any pressure rise in leakage line might destroy the sealing of the oil inlet.

Maintenance

The oil inlet is for the most part resistant to wear and needs no maintenance .

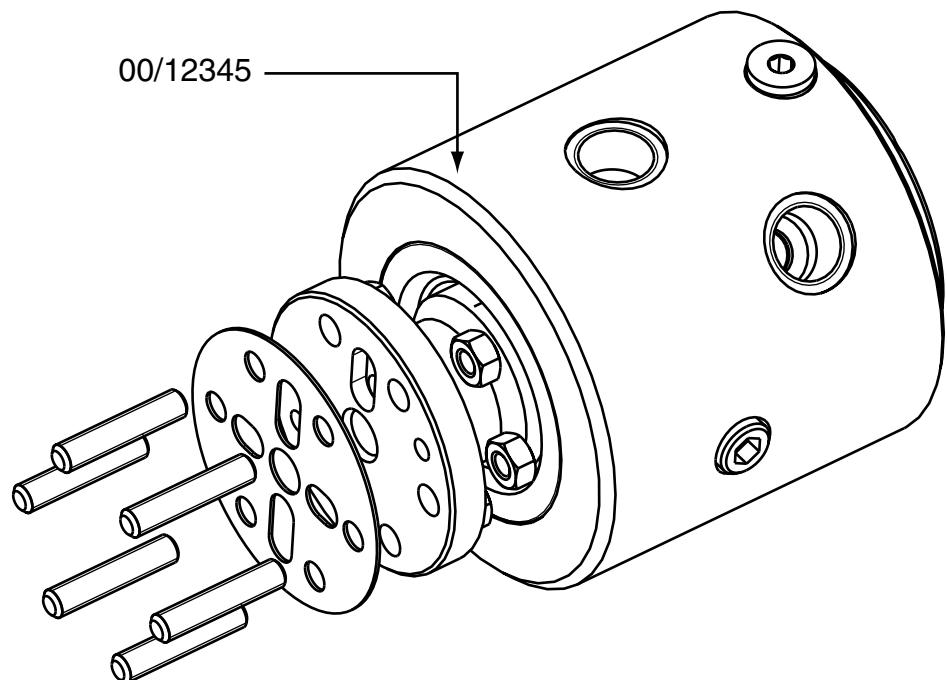
Improper use of the oil inlet (e.g. pressure in leakage line, dirty working fluid) might destroy the shaft seals.

Do not dismantle defective oil inlets.

Have them repaired only by the manufacturer.

Spare parts

Our guarantee for our products only applies when you use original Ortlinghaus spare parts. Please order spare parts only in writing. You will find the fabrication number, under which your oil inlet was manufactured, on the outside of the housing (arrow). Always state this number. It is made up of digits for the year and a consecutive number, e.g. 00/12345. In addition please state if possible the article number of your oil inlet.

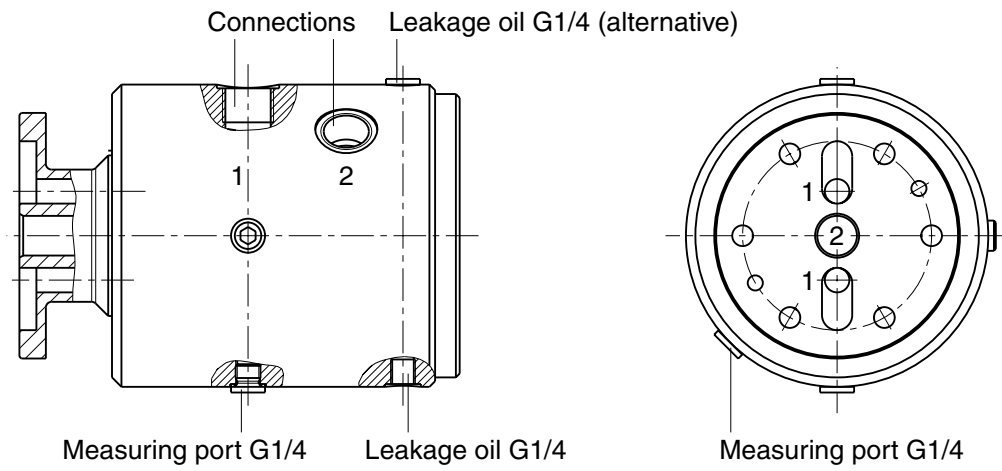


Flangeseals - spare parts

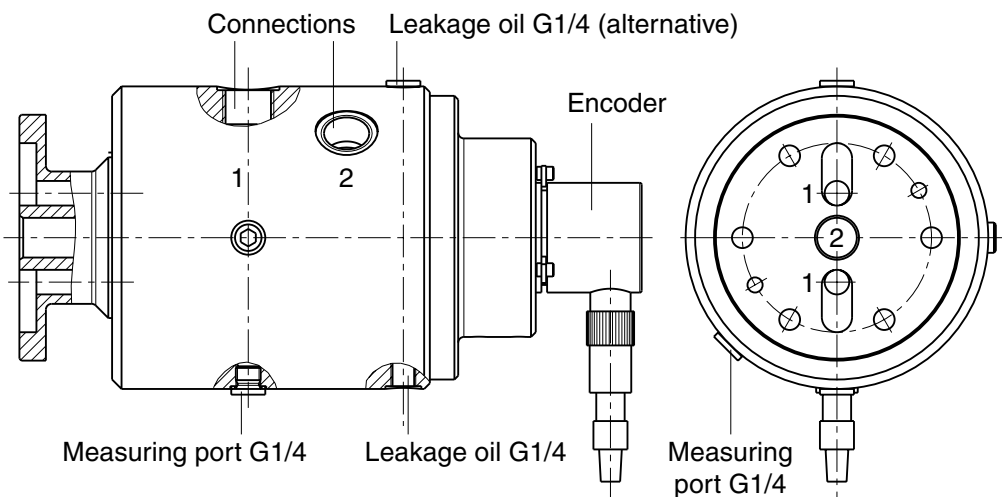
Oil inlet -Size-	Flangeseal Order-number
22	1-088-550-22-001-000
27	1-088-550-27-002-000
35	1-088-550-35-002-000

Different design variations

2 channel: 0088-226-Size- ... 040



2-channel: 0088-226-Size- ... 041 with encoder



3-channel: 0088-326-Size- ... 040

