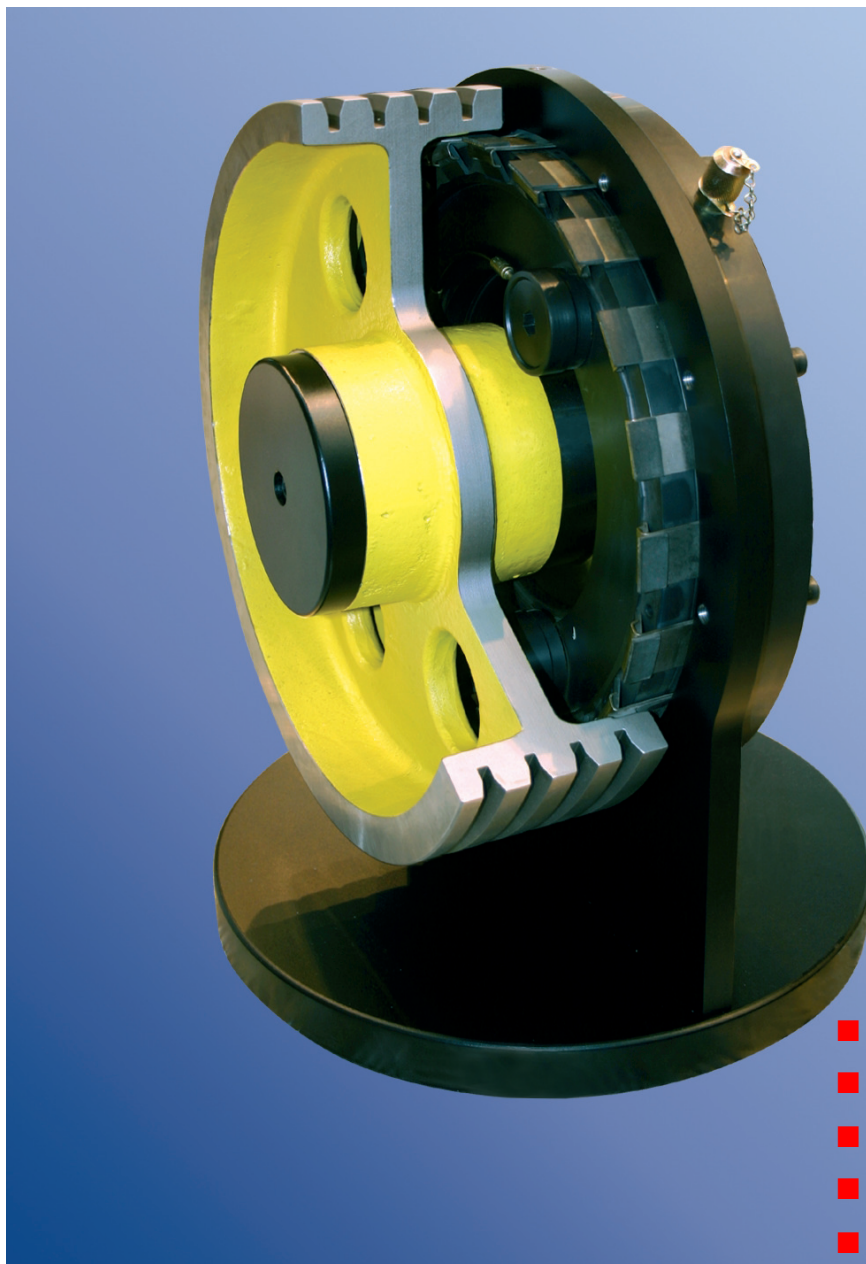


DIMO Brake

for gearless drives (direct motors)



- Safety brake
- Low-noise
- Very compact
- High power density
- Backlash-free
- Integratable bearing
- Handlever spatial separated

**Ortlinghaus - Plates.
Clutches. Brakes. Systems.**

Ortlinghaus DIMO Brake

The Ortlinghaus DIMO brake is a compact safety braking system for all kinds of gearless (directly driven) applications. The brake is actuated electromagnetically.



The DIMO brake offers:

- Very low-noise operation as a result of an innovative damping system
 - Use in sensitive applications, e. g.: elevators, escalators, stage technology, ...
- Multiply-redundant braking torque
 - Maximum safety (fail-safe technology)
 - Use for the transportation of passengers
- Compact construction based on a patented design
 - Minimised installation space and hence reduction in costs



Operation

This brake holds loads statically and backlash-free and to a certain extent can also take on dynamic braking applications. In the de-energized condition the braking system is effective.

Design

The brake is spring-applied and electromagnetically released. The braking force operates in a radial direction directly on a component part of the respective application (e.g. leading sheave).

The integratable bearing additionally presents a bearing point for the inserted shaft. The patented design features both redundancy (fail-safe technology) as well as compact design. (EC type approval in accordance with Annex V of Directive 95/16/EC: "Safety equipment for the prevention of overspeed in an upward-moving elevator car").

In the event of a power failure, the brake can be released hydraulically via a hand lever.

The brake is provided with monitoring contacts for monitoring the switch position and the degree of wear.

- Integration into interfacing parts
 - Minimised installation space and hence reduction in costs
- Holding of a load with zero backlash
 - Approached position is maintained safely
- Bearing point integratable into the brake
 - Economies in installation time and costs
 - Minimised installation space and hence reduction in costs
- Hydraulic force transmission by hand lever
 - Spatial separation of handlever and brake
 - Reduction in installation costs
- Monitoring contacts for monitoring the switch position and the degree of wear
 - Maximum safety
- Power saving circuit
 - Reduction in energy costs